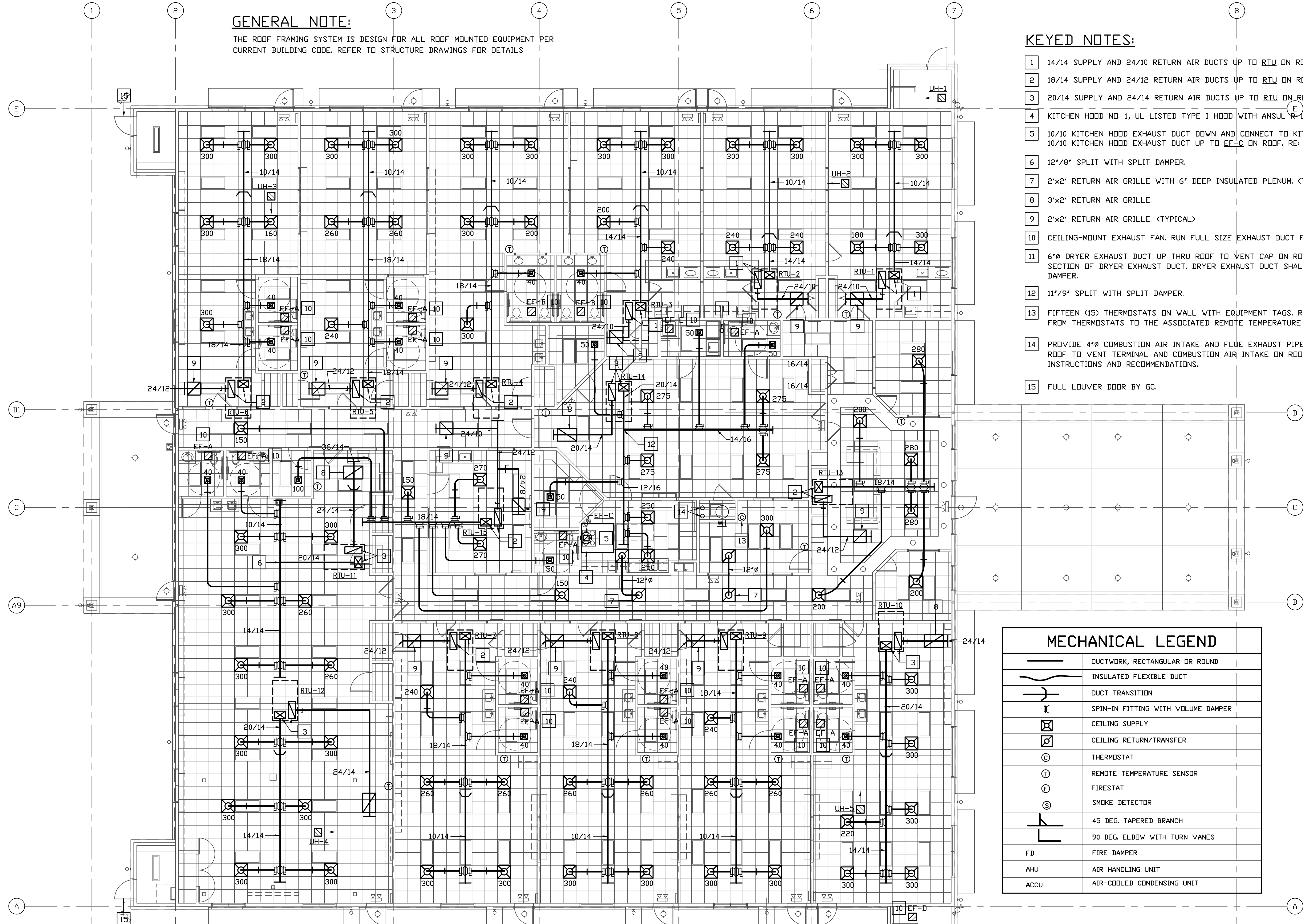


| REVISIONS AND ISSUANCE |         |             |
|------------------------|---------|-------------|
| NO.                    | DATE    | DESCRIPTION |
| 08/13/2018             | PRICING |             |



**GENERAL NOTE:**  
 THE ROOF FRAMING SYSTEM IS DESIGN FOR ALL ROOF MOUNTED EQUIPMENT PER CURRENT BUILDING CODE. REFER TO STRUCTURE DRAWINGS FOR DETAILS

- KEYED NOTES:**
- 14/14 SUPPLY AND 24/10 RETURN AIR DUCTS UP TO RTU ON ROOF.
  - 18/14 SUPPLY AND 24/12 RETURN AIR DUCTS UP TO RTU ON ROOF.
  - 20/14 SUPPLY AND 24/14 RETURN AIR DUCTS UP TO RTU ON ROOF.
  - KITCHEN HOOD NO. 1, UL LISTED TYPE I HOOD WITH ANSUL R-102 FIRE SUPPRESSION SYSTEM.
  - 10/10 KITCHEN HOOD EXHAUST DUCT DOWN AND CONNECT TO KITCHEN HOOD WITH TRANSITION. 10/10 KITCHEN HOOD EXHAUST DUCT UP TO EF-C ON ROOF. RE: DETAIL 02/M3.0
  - 12"/8" SPLIT WITH SPLIT DAMPER.
  - 2"x2" RETURN AIR GRILLE WITH 6" DEEP INSULATED PLENUM. (TYP. OF 2)
  - 3"x2" RETURN AIR GRILLE.
  - 2"x2" RETURN AIR GRILLE. (TYPICAL)
  - CEILING-MOUNT EXHAUST FAN. RUN FULL SIZE EXHAUST DUCT FROM FAN DISCHARGE TO ROOF CAP.
  - 6" DRYER EXHAUST DUCT UP THRU ROOF TO VENT CAP ON ROOF. PROVIDE CLEANOUT FOR VERTICAL SECTION OF DRYER EXHAUST DUCT. DRYER EXHAUST DUCT SHALL BE TERMINATED WITH A BACKDRAFT DAMPER.
  - 11"/9" SPLIT WITH SPLIT DAMPER.
  - FIFTEEN (15) THERMOSTATS ON WALL WITH EQUIPMENT TAGS. RUN CONTROL WIRING IN CONDUITS FROM THERMOSTATS TO THE ASSOCIATED REMOTE TEMPERATURE SENSORS.
  - PROVIDE 4"Ø COMBUSTION AIR INTAKE AND FLUE EXHAUST PIPES FROM WATER HEATER UP THRU ROOF TO VENT TERMINAL AND COMBUSTION AIR INTAKE ON ROOF PER HEATER MANUFACTURER'S INSTRUCTIONS AND RECOMMENDATIONS.
  - FULL LOUVER DOOR BY GC.

**MECHANICAL LEGEND**

|  |                                    |
|--|------------------------------------|
|  | DUCTWORK, RECTANGULAR OR ROUND     |
|  | INSULATED FLEXIBLE DUCT            |
|  | DUCT TRANSITION                    |
|  | SPIN-IN FITTING WITH VOLUME DAMPER |
|  | CEILING SUPPLY                     |
|  | CEILING RETURN/TRANSFER            |
|  | THERMOSTAT                         |
|  | REMOTE TEMPERATURE SENSOR          |
|  | FIRESTAT                           |
|  | SMOKE DETECTOR                     |
|  | 45 DEG. TAPERED BRANCH             |
|  | 90 DEG. ELBOW WITH TURN VANES      |
|  | FIRE DAMPER                        |
|  | AIR HANDLING UNIT                  |
|  | AIR-COOLED CONDENSING UNIT         |

**01 FLOOR PLAN - MECHANICAL**  
 SCALE: 1/8" = 1'-0"

**IVY KIDS EARLY LEARNING CENTER**  
 4434 CR 94  
 Manvel, Tx 77578

MEP Consultants  
 BLK Engineering & Consulting Co.  
 3423 Spring Arbor Ln.  
 Sugar Land, TX 77479  
 (1) 832 563 3127  
 TBPE Firm #12672

THESE DOCUMENTS ARE FOR INTERIM REVIEW AND NOT FOR CONSTRUCTION, BIDDING OR PERMIT PURPOSES.  
 RESPONSIBLE ENGINEER:  
 CHH-TAI KENG  
 79201  
 08-13-2018

DRAWING TITLE

**MECHANICAL FLOOR PLAN**

|                             |                         |
|-----------------------------|-------------------------|
| DRAWN BY<br>FK              | CHECKED BY<br>CK        |
| DATE<br>03/30/2017          | JOB NO.<br>sedona lakes |
| DRAWING NO.<br><b>M-1.0</b> |                         |